

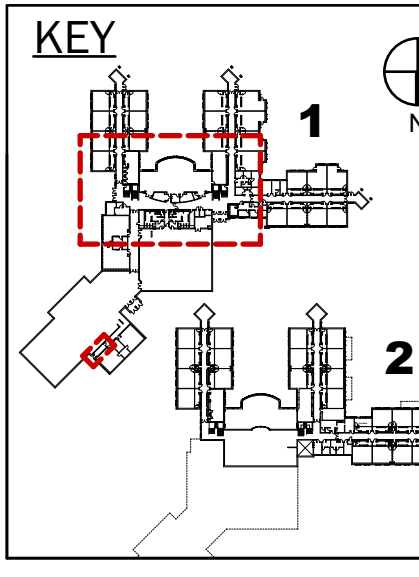
Revisions



5 South Street  
Post Office Box  
583  
Portland, Maine  
04112-0583  
Voice:  
207.761.5911  
Email:  
sba@sbaarchitects.com

Consultants

Structural Engineer:  
Pinkham & Greer Consulting  
Engineers  
Mechanical Engineer:  
Bennett Engineering  
Electrical Engineer:  
Swiftcurrent Engineering  
Specifications:  
Lowell Specifications, Inc.

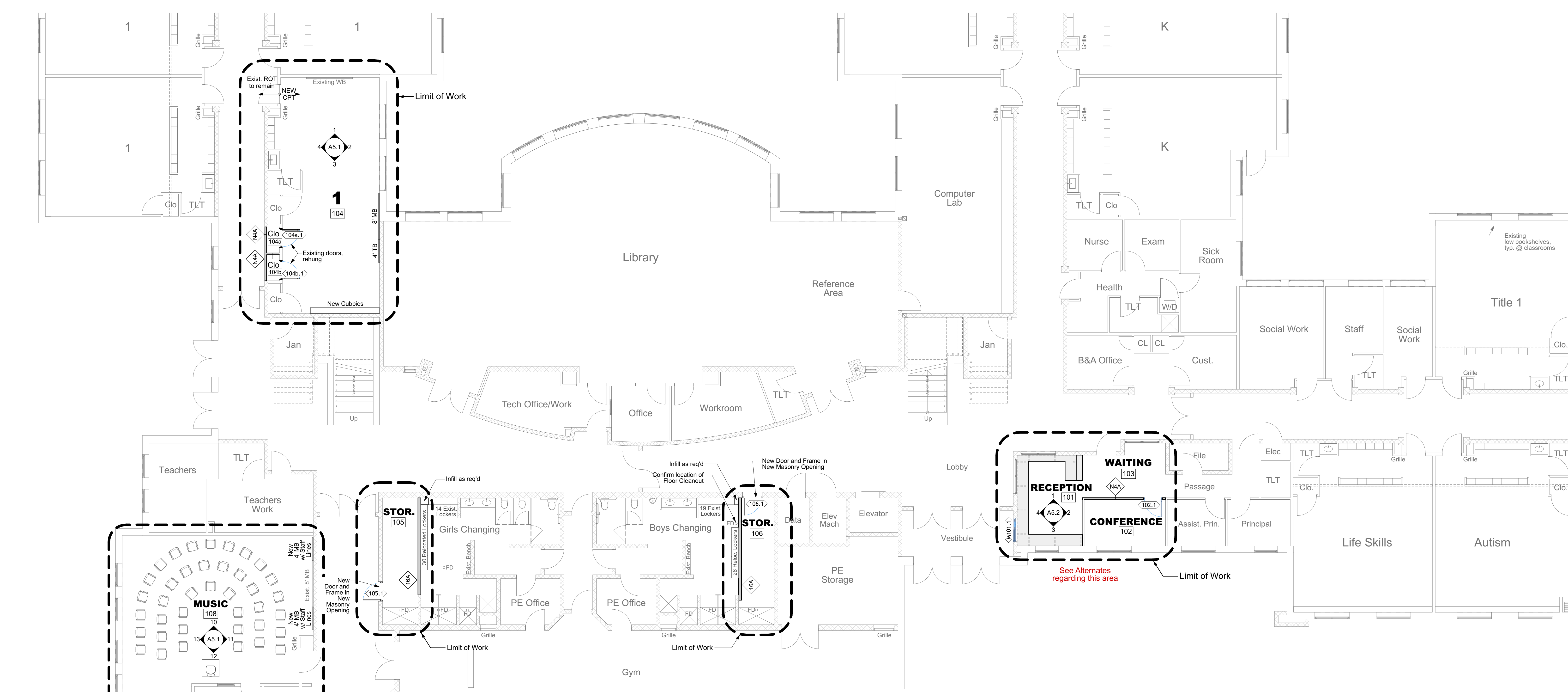


Job No.: #Pin  
Date: 5/2/2019  
Scale: As Noted  
Drawn by:  
Checked by:

Drawing Title:  
**Floor Plan First  
Floor, Partition  
Types**

**A1.1**

Not For Construction



**1**  
**A1.1** First Floor (Partial)  
SCALE: 1/8" = 1'-0"

1 HOUR RATED	NON-RATED	PARTITION TYPES	
14A UL DES U465	N4A		5/8" GWB TYPE "X" 3 5/8" METAL STUDS @ 24" O.C. 3 1/2" ACOUSTIC BATT INSULATION 5/8" GWB TYPE "X" ACOUSTICAL SEALANT ALL SIDES STC 45 REQUIRED
16A UL DES U465	N6A		5/8" GWB TYPE "X" 6" METAL STUDS @ 24" O.C. 3 1/2" ACOUSTIC BATT INSULATION 5/8" GWB TYPE "X" ACOUSTICAL SEALANT ALL SIDES STC 45 REQUIRED
14B UL DES U465	N4B		2 LAYERS 5/8" GWB TYPE "X" 3 5/8" METAL STUDS @ 24" O.C. 3 1/2" ACOUSTIC BATT INSULATION 2 LAYERS 5/8" GWB TYPE "X" ACOUSTICAL SEALANT ALL SIDES STC 55 REQUIRED
16B UL DES U465	N6B		2 LAYERS 5/8" GWB TYPE "X" 6" METAL STUDS @ 24" O.C. 3 1/2" ACOUSTIC BATT INSULATION 2 LAYERS 5/8" GWB TYPE "X" ACOUSTICAL SEALANT ALL SIDES STC 55 REQUIRED

**GENERAL PARTITION NOTES:**

- All Partitions are continuous through ceiling and sealed tight to underside of the deck to provide smoke barriers and sound-tight enclosures - except where otherwise noted. Provide sealant system complying with fire rated assemblies.
- Seal all penetrations through walls and floors.
- Penetrations through fire-rated walls and floors shall be sealed with fire-stop sealant conforming with approved installation for specific rated assemblies.
- Stud layout shall conform to requirements of fire-rated assemblies with GWB joints continuously supported by steel studs or framing.
- All stud walls under beams & decks shall have deflection joints. See typical deflection joint details.
- See Interior Elevations for heights and layouts of various finishes.
- At partitions with multiple layers of GWB, stagger all joints.
- Acoustic batt insulation to be adhered to GWB or supported by "Insul-Hold" or equivalent device.
- Infill at existing walls to match existing finishes.

**PARTITION TYPE KEY:**

RATING — STUD/CMU WIDTH (Nominal) — TYPE



**2**  
**A1.1** First Floor (Partial)  
SCALE: 1/8" = 1'-0"

Add 7/8" Resilient Channels & (2) Layers 5/8" GWB. Seal to Roof Deck.

Existing low bookshelves, typ. @ classrooms

See Alternates regarding this area