

Revisions

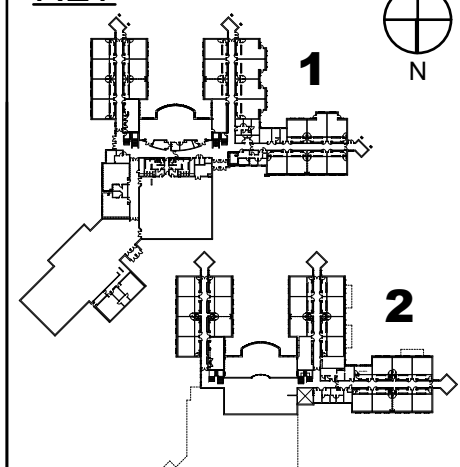
Stephen Blatt
Architects

5 South Street
Post Office Box
583
Portland, Maine
04112-0583
Voice:
207.761.5911
Email:
sba@sbarchitects.com

Consultants

Structural Engineer:
Pinkham & Greer Consulting
Engineers
Mechanical Engineer:
Bennett Engineering
Electrical Engineer:
Swiftcurrent Engineering
Specifications:
Lowell Specifications, Inc.

KEY

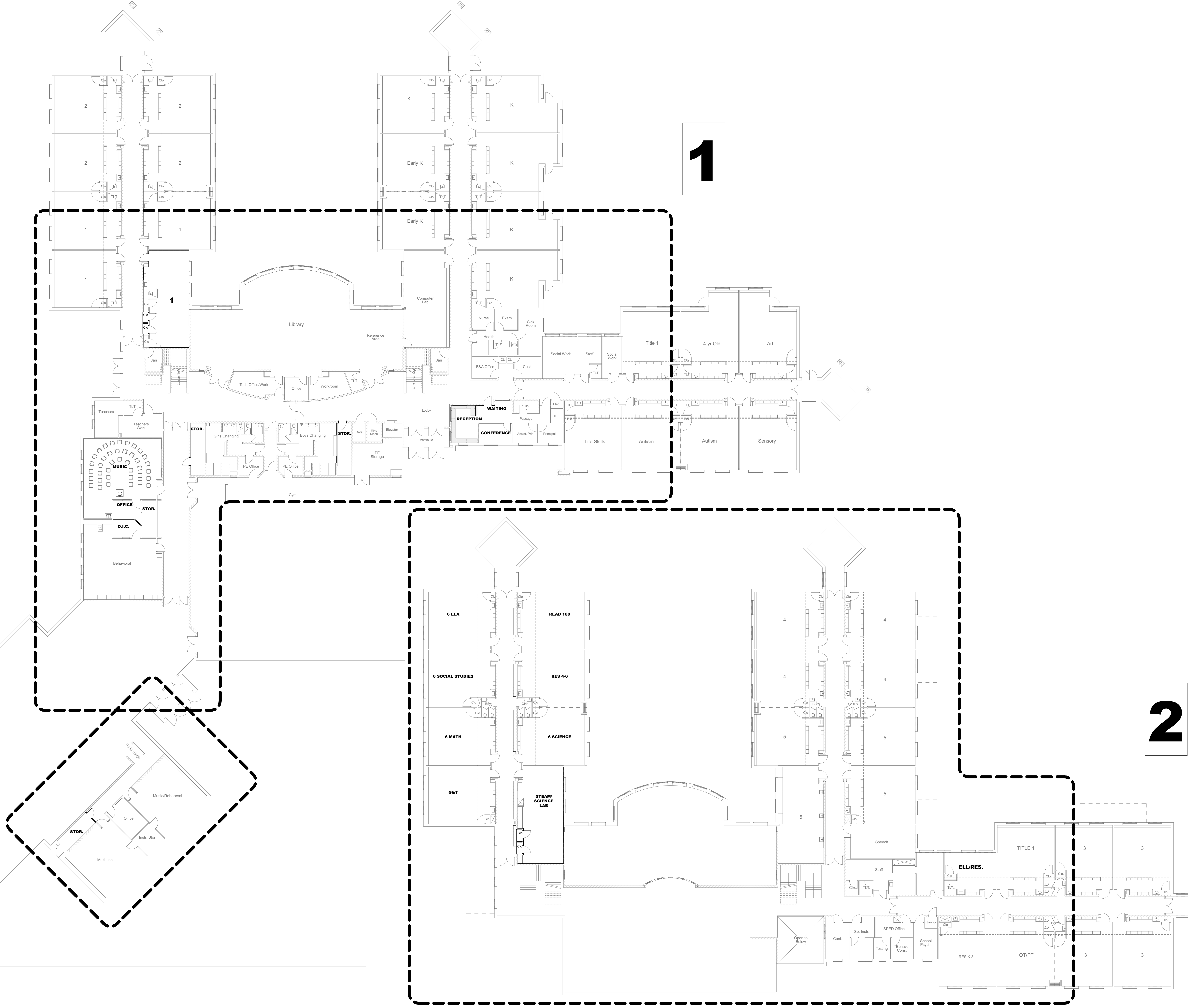


Job No.: #Pin
Date: 5/3/2019
Scale: As Noted
Drawn by:
Checked by:

Drawing Title:
Plans for Sheet Key

A1.0

Not For Construction



1

2

1
A1.0 First Floor for Key
SCALE: 1/16" = 1'-0"

2
A1.0 Second Floor for Key
SCALE: 1/16" = 1'-0"